

www.everexam.org
Mob.: 8595517959



Youtube CHANNEL
EVEREXAM

Q:) The compressive strength of granite is

A : 50 to 70 MN/m²

B : 70 to 130 MN/m²

C : 130 to 170 MN/m²

D : 170 to 200 MN/m²

www.everexam.org
MOD.: 8595517959



Youtube CHANNEL

EVEREXAM

Q:) In order to dry the quarry sap of a freshly quarried stone, it should be exposed to open air for a period of

A : One month

B : Four months

C : Six to twelve months

D : Two years



Youtube CHANNEL

EVEREXAM

Q:) Which of the following statements is wrong?

A : A stone with large percentage of quartz is very soft.

B : Quartz has a greasy lustre.

C : Felspar is a silicate of aluminium with varying amounts of potash, soda or lime.

D : All of these

Learn More, Earn More

Youtube CHANNEL

EVEREXAM

Q:) A limestone found in seams of great thickness in non-crystalline texture with earthy appearance, is called

A : Granular limestone

B : Compact limestone

C : Magnesium limestone

D : Kankar



Youtube CHANNEL

EVEREXAM

Q:) The attrition test on stones is performed

A : To determine the crushing strength of the stone

B : For assessing the resistance of stone to the sun, rain, wind etc.

C : To ascertain the stability of the stone when exposed to acid fumes

D : For determining the rate of wear of stone due to ornamental work should be soft.

Learn More, Earn More

Youtube CHANNEL

EVEREXAM

Q:) The percentage of alumina in a good brick clay should vary from

A : 20 to 30%

B : 30 to 40%

C : 40 to 50%

D : 50 to 60%



Youtube CHANNEL

EVEREXAM

Q:) Which of the following constituent, when present in excess quantity in clay causes the bricks to melt and distort during burning?

A : Alumina

B : Silica

C : Lime

D : Alkalies



Youtube CHANNEL

EVEREXAM

Q:) The process of mixing clay, water and other ingredients to make bricks, is known as

A : Tempering

B : Pugging

C : Kneading

D : Moulding



Youtube CHANNEL

EVEREXAM

Q:) The compressive strength of perforated bricks should not be less than

A : 4 MN/m^2

B : 5 MN/m^2

C : 6 MN/m^2

D : 7 MN/m^2



Youtube CHANNEL

EVEREXAM

Q:) The length of a curved tile varies from

A : 10 to 12cm

B : 12 to 15cm

C : 15 to 20cm

D : 20 to 22.5cm



Youtube CHANNEL

EVEREXAM

Q:) The dolomite bricks are

A : Ordinary bricks

B : Acid refractory bricks

C : Basic refractory bricks

D : Neutral refractory bricks



Youtube CHANNEL

EVEREXAM

Q:) The hydraulic lime which resembles very much with Portland cement in its chemical composition is called

A : Feebly hydraulic lime

B : Moderately hydraulic lime

C : Eminently hydraulic lime

D : None of these



Youtube CHANNEL

EVEREXAM

Q:) The process of adding the required quantity of water to quick lime in order to convert it not hydraulic lime, is known as

A : Calcination

B : Hydration

C : Slaking

D : Quenching



Youtube CHANNEL

EVEREXAM

Q:) The silica in Portland cement

should be

A : 10 to 20%

B : 20 to 25%

C : 25% to 40%

D : 40 to 60%

www.everexam.org

Mob.: 8595517959



Youtube CHANNEL

EVEREXAM

Q:) The percentage of the slag component of Portland-slag cement varies from

A : 10 to 40%

B : 40 to 70%

C : 70 to 80%

D : 80 to 90%



Youtube CHANNEL

EVEREXAM

Q:) The expansion of cement should not exceed for any type of Portland cement.

A : 5mm

B : 10mm

C : 15mm

D : 20mm



Youtube CHANNEL

EVEREXAM

Q:) The initial setting time of rapid hardening cement should not be less than

A : 30 min

B : 1 hour

C : 4 hours

D : 8 hours



Youtube CHANNEL

EVEREXAM

www.everexam.org
Mob.: 8595517959

Q:) The percentage of the residue left after sieving good Portland cement in 90 micron sieve should not exceed

A : 0.05

B : 0.1

C : 0.2

D : 0.3



Youtube CHANNEL

EVEREXAM

Q:) The sand is mixed with lime mortar to

A : Reduce cost

B : Reduce setting time

C : Improve strength

D : Prevent shrinkage and cracking



Youtube CHANNEL

EVEREXAM

Q:) For R.C.C. construction, the maximum size of coarse aggregate is limited to

A : 10mm

B : 15mm

C : 20mm

D : 25mm



Youtube CHANNEL

EVEREXAM

Q:) The defect caused due to over-maturity and unventilated storage of the wood during its transit is called

A : Knot

B : Ring gall

C : Foxiness

D : Heart shake



Youtube CHANNEL

EVEREXAM

www.everexam.org
Mob.: 8595517959

Q:) The defect caused by imperfect seasoning, is called

A : Wet rot

B : Dry rot

C : Honeycombing

D : Cup shake



Youtube CHANNEL

EVEREXAM

Q:) The chief ingredients of a paint is

A : Alchol

B : Drier

C : Oil

D : Pigment



Youtube CHANNEL

EVEREXAM

www.everexam.org
Mob.: 8595517959

Q:) The liquid part of the paint is

called

A : Pigment

B : Vehicle

C : Solvent

D : Drier

www.everexam.org
Mob.: 8595517959



Youtube CHANNEL

EVEREXAM

Q:) Linseed oil in paint is used as a

A : Base

B : Thinner

C : Carrier

D : Pigment



Q:) The paint which has high reflective property is

A : Cellulose paint

B : Casein paint

C : Bronze paint

D : Enamel paint



Youtube CHANNEL

EVEREXAM

Q:) Spirit varnish consists of

A : Spirit and wax

B : Spirit and shellac

C : Turpentine, spirit and wax

D : Turpentine, spirit and shellac



Youtube CHANNEL

EVEREXAM

www.everexam.org
Mob: 8595517959

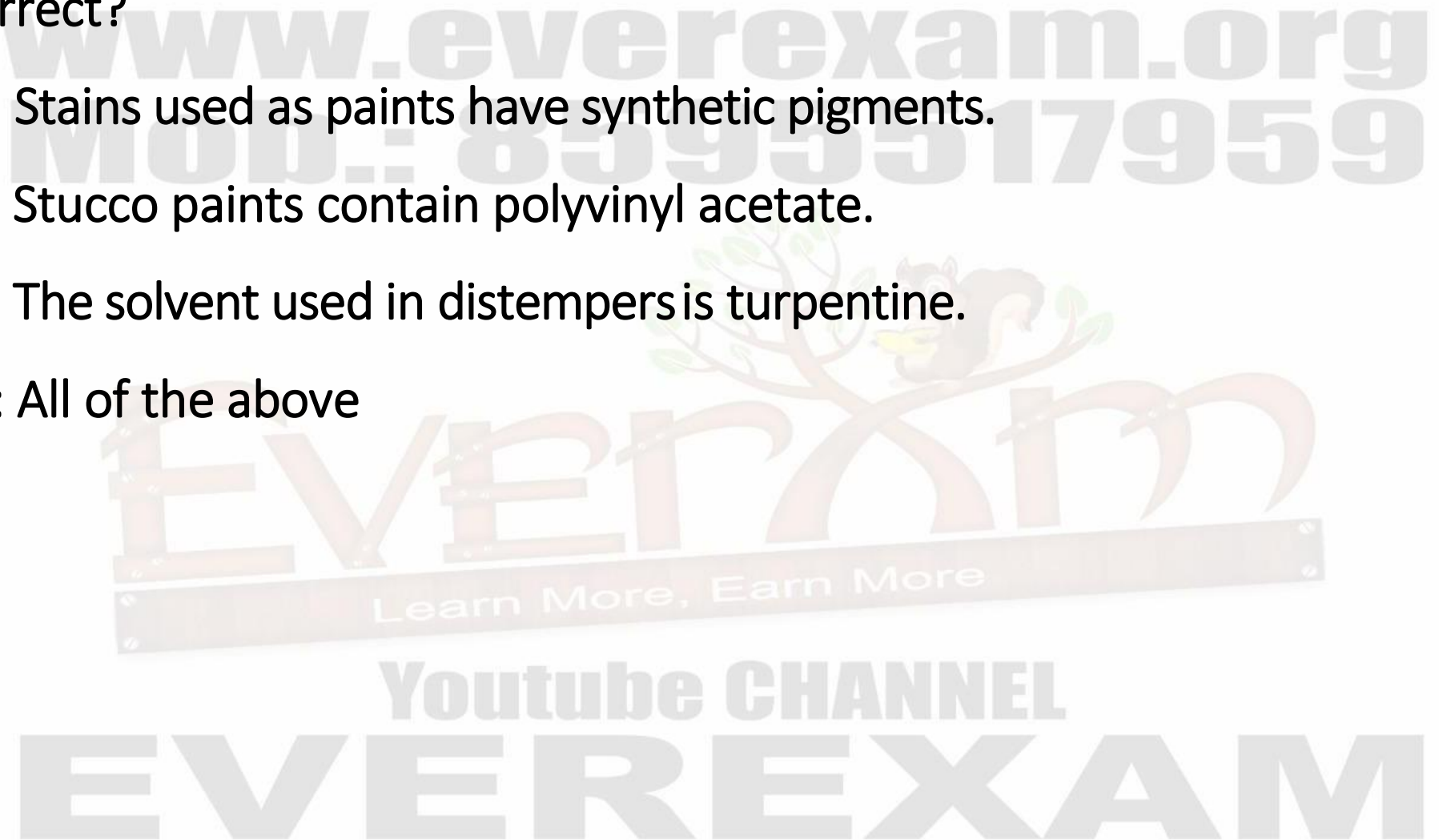
Q:) Which of the following statement is correct?

A : Stains used as paints have synthetic pigments.

B : Stucco paints contain polyvinyl acetate.

C : The solvent used in distempers is turpentine.

D : All of the above



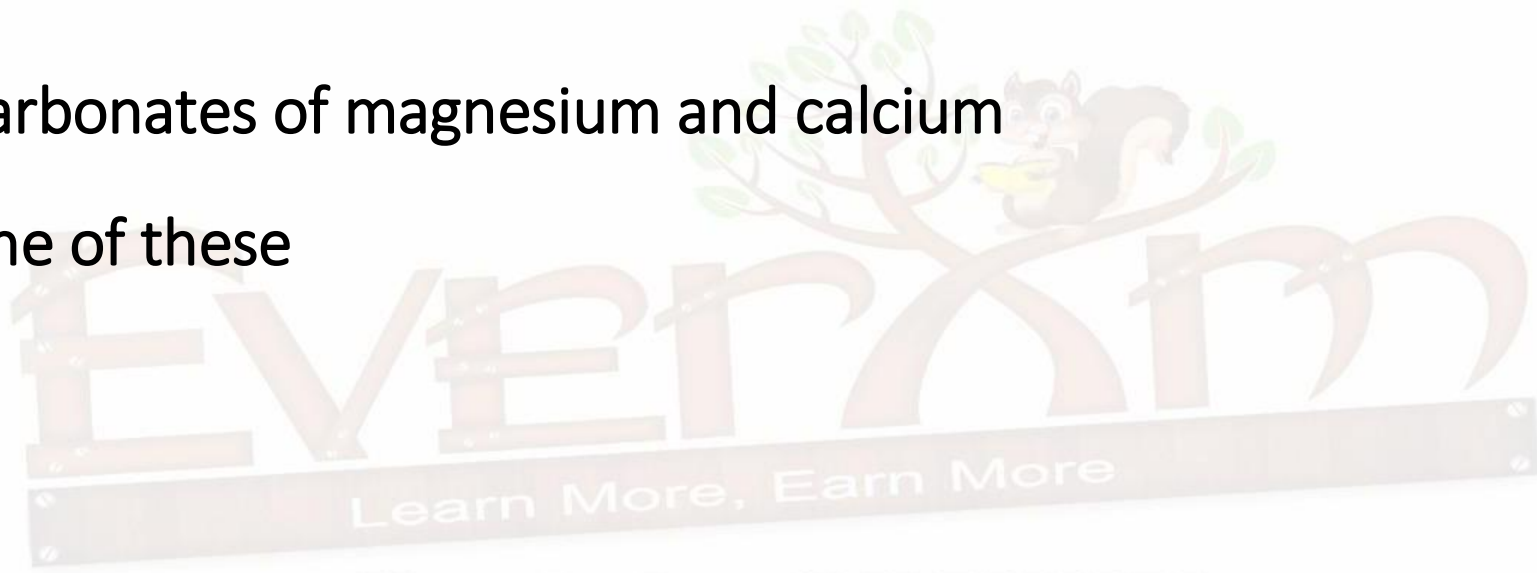
Q:) Dolomite, a mineral of sedimentary rocks is:

A : Bicarbonate of magnesium (Mg CO_3)

B : Bicarbonate of calcium (Ca CO_3)

C : Bicarbonates of magnesium and calcium

D : None of these



Youtube CHANNEL

EVEREXAM

Q:) The Smith's test of stones is performed to find out:

A : The presence of soluble matter

B : The tensile strength

C : The presence of lime

D : None of there



Youtube CHANNEL

EVEREXAM

Q:) The percentage absorption of water of good stones by weight after 24 hours should not exceed:

A : 0.5

B : 0.6

C : 0.7

D : 0.42



Youtube CHANNEL

EVEREXAM

Q:) The gun powder consists of:

A : 75% of sandy earth, saturated with 25% of nitroglycerin

B : 60% of sandy earth, saturated with 40% of nitroglycerin

C : 50% of sandy earth, saturated with 50% of nitroglycerin

D : 25% of sandy earth, saturated with 75% of nitroglycerin



Youtube CHANNEL

EVEREXAM

Q:) Which one of the following sequence of steps is correct for preparing the clay for making bricks?

A : Weathering-Blending-Tempering

B : Blending-Tempering-Weathering.

C : Tempering-Weathering-Blending

D : None of these is correct

Learn More, Earn More

Youtube CHANNEL

EVEREXAM

Q:) Pick up the correct statement from the following:

A : Clay occurs plenty in nature.

B : Clay is a distinct product of chemical weathering of igneous rocks

C : The orthoclase felsper is mainly responsible for the production of clays in nature

D : All of these are correct

Learn More, Earn More

Youtube CHANNEL

EVEREXAM

Q:) The process of burning of earth bricks:

A : Is very important operation in brick manufacturing

B : Imparts hardness and strength to the bricks

C : Makes the bricks dense and durable

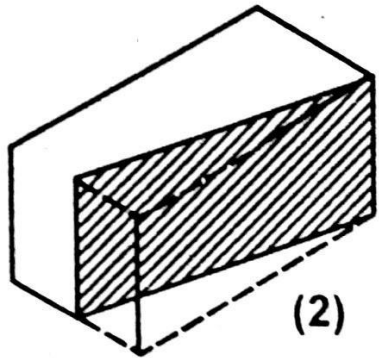
D : All of these



Youtube CHANNEL

EVEREXAM

Q:) The brick shown in the figure (2) is called



A : A chamfered brick

B : A mitred closer

C : A saddle leak brick

D : A bull nose brick

w.everexam.org
b.: 8595517959



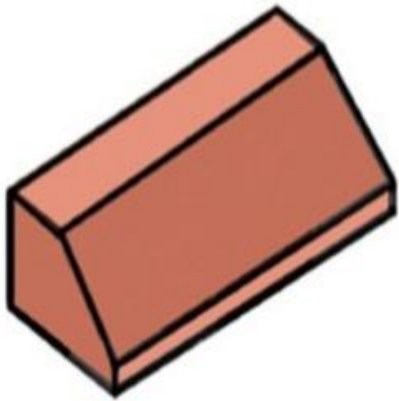
Learn More, Earn More

Youtube CHANNEL

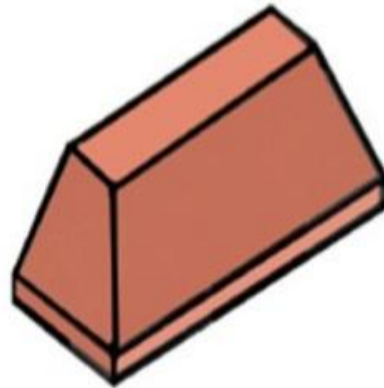
EVEREXAM

Plinth Bricks

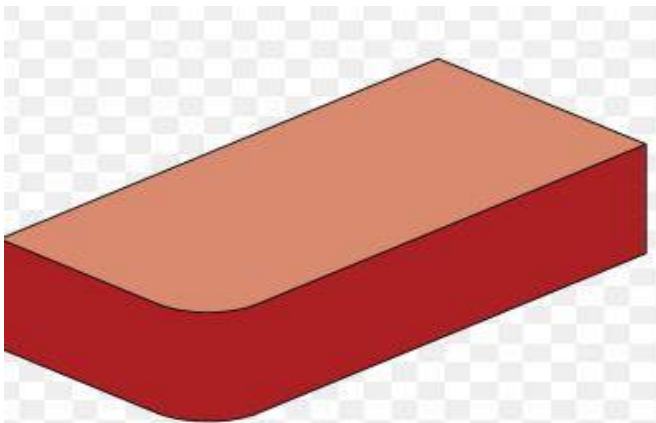
Plinth bricks are chamfered and can be used as a decorative feature or to alter the width of a wall.



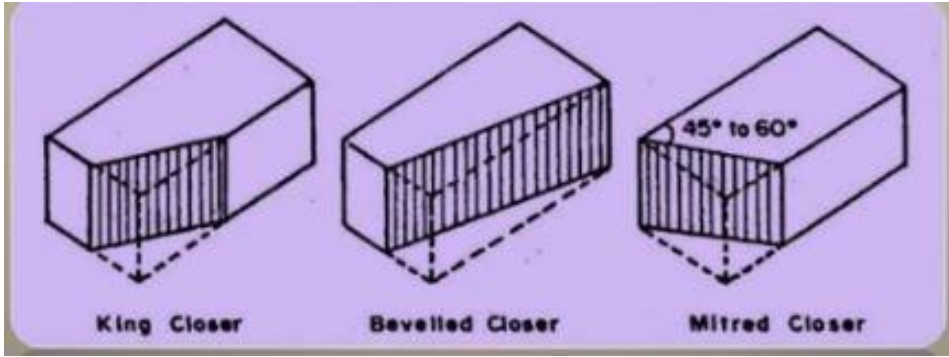
Plinth stretcher



External Plinth







Q:) Match List I with List II and select the correct answer using the codes given below the lists :

List - I	List - II
A. Air entraining portland cement	1. Suitable for every large structure
B. Low heat portland cement	2. Unsuitable for very large masses of concrete
C. Hydrophobic portland cement	3. Greater resistance to frost attack
D. Rapid hardening portland cement	4. Safe storage under unfavorable conditions of humidity.

Codes:

A : A-4, B-2, C-1, D-3

B : A-3, B-4, C-1, D-2

C : A-3, B-1, C-4, D-2

D : A-4, B-1, C-2, D-3

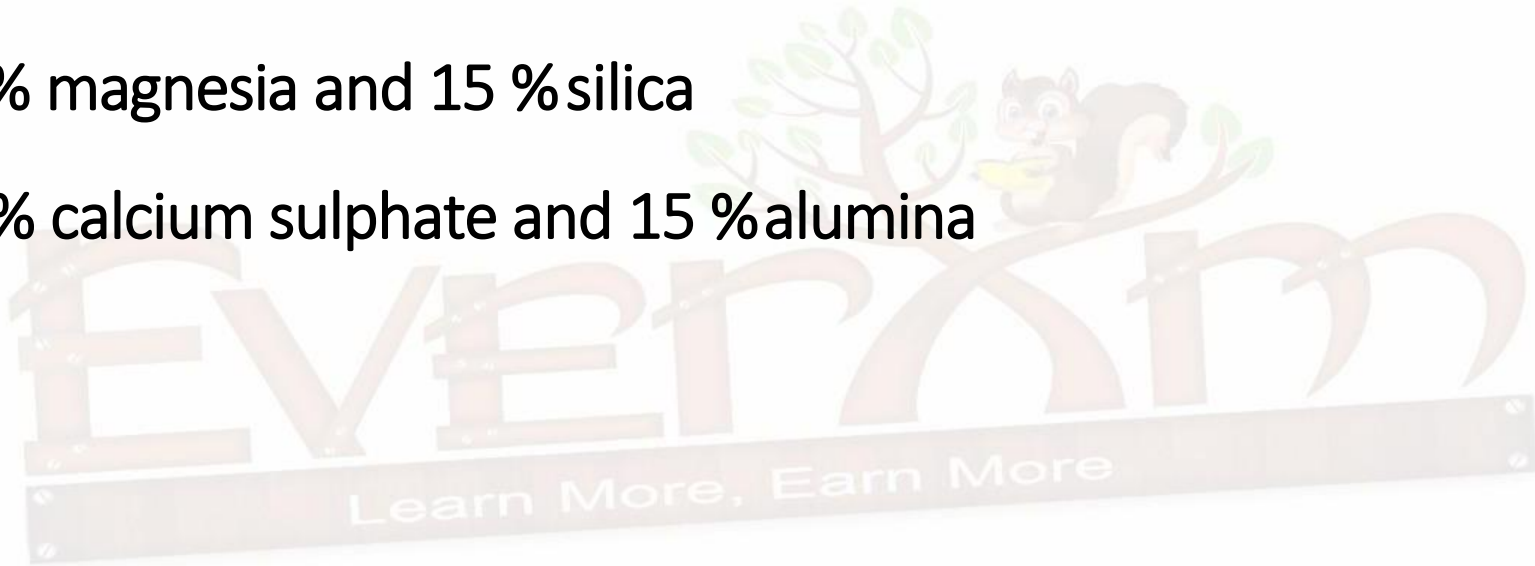
Q:) Blast furnace slag has approximately

A : 45 % calcium oxide and about 35 % silica

B : 50 % alumina and 20 % calcium oxide

C : 25 % magnesia and 15 % silica

D : 25 % calcium sulphate and 15 % alumina



Youtube CHANNEL

EVEREXAM

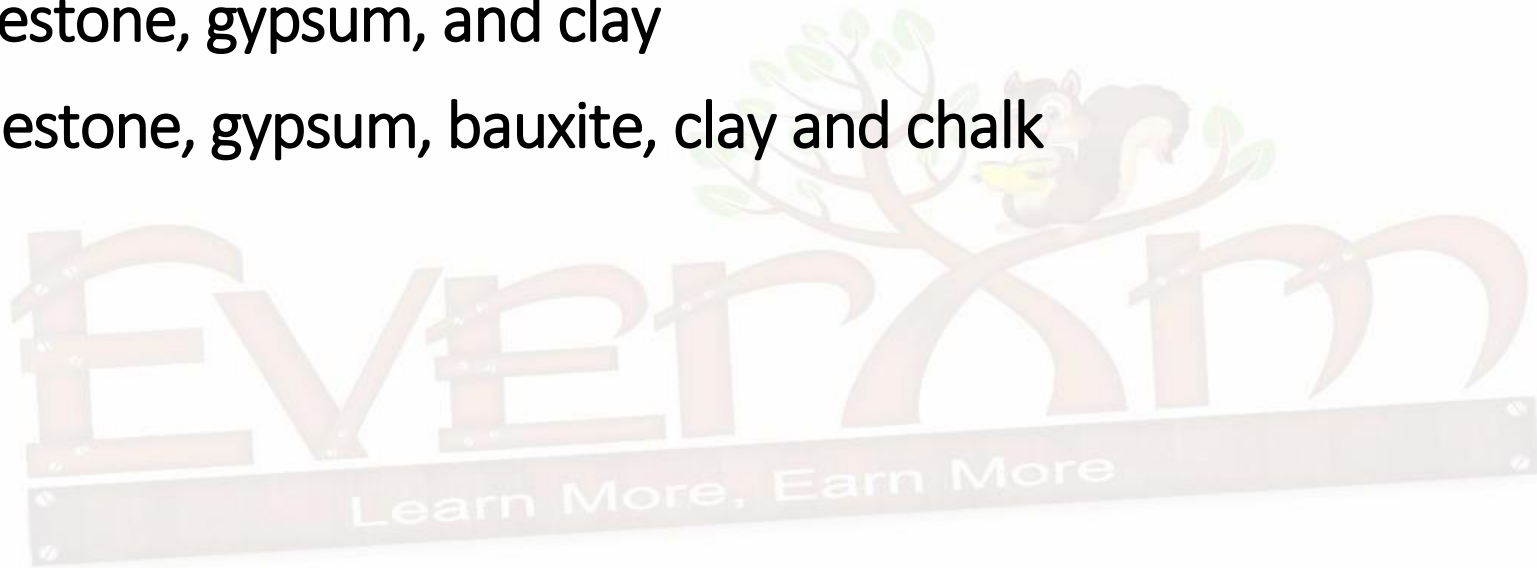
Q:) High alumina cement is produced by fusing together a mixture of A

: Limestone and bauxite

B : Limestone, bauxite and gypsum

C : Limestone, gypsum, and clay

D : Limestone, gypsum, bauxite, clay and chalk



Youtube CHANNEL

EVEREXAM

Q:) Consider the following statements :

The addition of surfactants in the concrete mix results in

1. Increase in the water cement ratio
 2. Decrease in the water cement ratio
 3. Increase in the strength of concrete
 4. Decrease in the curing duration
 5. Increase in the density of concrete
- Of these statements

A : 1, 3 and 4 are correct

B : 2, 3 and 5 are correct

C : 3, 4 and 5 are correct

D : 1, 4 and 5 are correct

Q:) Consider the following statements :

Higher water cement ratio in concrete results in

1. Stronger mix
2. Better workable mix
3. A weak mix
4. Less bleeding

Of these statements

- A : 1 and 2 are correct
- B : 2 and 4 are correct
- C : 3 and 4 are correct
- D : 1 and 4 are correct



Learn More, Earn More

Youtube CHANNEL

EVEREXAM

Q:) Match List I with List II and select the correct answer using the codes given below the lists :

List - I	List - II
A. Deciduous	1. Soft wood
B. Conifer	2. Hard wood
C. Endogenous	3. Eucalyptus
D. Exogenous	4. Bamboo

Codes:

A : A - 1, B - 2, C - 3, D - 4

B : A - 2, B - 1, C - 3, D - 4

C : A - 2, B - 1, C - 4, D - 3

D : A - 1, B - 2, C - 4, D - 3

Q:) During the conversion of timber by sawing, in order to obtain strong timber pieces, the cuts should be made by

A : Ordinary sawing

B : Tangential sawing

C : Quarter sawing

D : Radial sawing



Learn More, Earn More

Youtube CHANNEL

EVEREXAM

Q:) Match List I with List II and select the correct answer using the codes given below the lists :

List - I	List - II
A. The innermost part or core of the stem of a tree	1. Transverse septa (medullary layer)
B. The vascular tissue which encloses the pith	2. Annual rings
C. A cellular tissue and woody fibre arrangement in distinct concentric circle	3. The cambium layer
D. The thin layer below the bark not converted into sap wood as yet	4. The outermost cover or skin of the stem
	5. medulla (pith)

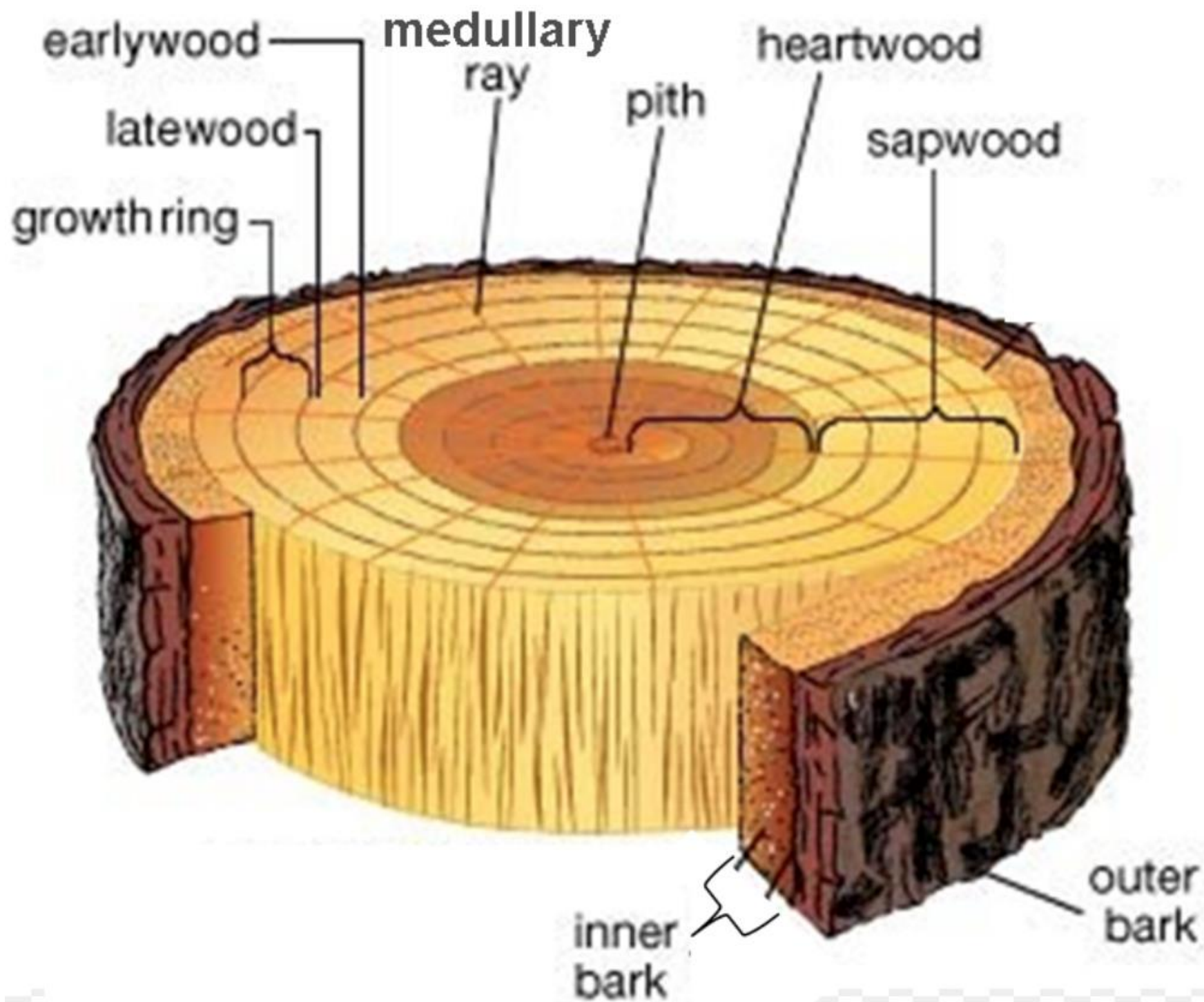
Codes:

A : A - 2, B - 5, C - 3, D - 4

B : A - 5, B - 1, C - 2, D - 3

C : A - 4, B - 3, C - 2, D - 1

D : A - 5, B - 1, C - 4, D - 3



Q:) A gauged mortar is obtained by adding which of the following ingredients to cement?

A : Sand stone

B : Sand and surkhi

C : Sand and lime

D : Surkhi alone



Youtube CHANNEL

EVEREXAM

www.everexam.org
Mob.: 8595517959

Q:) Match List I with List II and select the correct answer using the codes given below the lists :

List - I	List - II
A. Water reducing admixture	1. Siphoned melanin formaldehyde
B. Air entraining agent	2. Calcium chloride
C. Super plasticizer	3. Lignosulphonate
D. Accelerator	4. Neutralized vinsos resin

Codes:

A : A - 2, B - 4, C - 1, D - 3

B : A - 1, B - 3, C - 4, D - 2

C : A - 3, B - 4, C - 1, D - 2

D : A - 3, B - 4, C - 2, D - 1

Q:) The role of super plasticizer in a cement paste is to

A : Disperse the particles

B : Disperse the particles and to remove air bubbles

C : Disperse the particles, remove air bubbles and to retard setting

D : Retard setting

Learn More, Earn More

Youtube CHANNEL

EVEREXAM

Q:) Surkhi is added to lime mortar to

A : Prevent shrinkage

B : Decrease setting time C : Increase bulk

D : Impart hydraulicity



Youtube CHANNEL

EVEREXAM

Q:) Consider the following statements

1. Dipping
2. Brushing or spraying
3. Pressure impregnation

The correct sequence in decreasing order of the effectiveness of these methods of preservation is

A : 1, 2, 3,

B : 2, 1, 3,

C : 3, 1, 2,

D : 3, 2, 1,

Q:) Consider the following strength of concrete :

1. Cube strength
2. Cylinder strength
3. Split-tensile strength
4. Modulus of rupture

The correct sequence in increasing order of these strengths is

:

A : 3, 4, 2, 1,

B : 3, 4, 1, 2,

C : 4, 3, 2, 1,

D : 4, 3, 1, 2,

Learn More, Earn More

Youtube CHANNEL

EVEREXAM

Q:) Consider the following statements

1. Tests on cement paste to determine initial and final setting times are done at normal consistency condition.
2. Low heat cement has a high percentage of tri-calcium aluminate.
3. High early strength portland cement contains a larger percentage of tricalcium silicate and a lower percentage of dicalcium silicate.

Which of these statements are correct?

A : 1 and 2

B : 1 and 3

C : 2 and 3

D : 1 , 2, and 3