



# CIVIL ENGINEERING LIVE ONLINE

## QUESTION PRACTICE PROGRAM

### SSC JE PRE 2019

**3000 +** QUESTIONS  
PRACTICE

**RS.399/-**

**Validity: 4 Months**

### RAJASTHAN JE

**2000 +** QUESTIONS  
PRACTICE

**RS.299/-**



**TELEGRAM CHANNEL**  
**EVEREXAM TECH**

**DOWNLOAD**  
**EVEREXAM APP**



**GET IT ON**  
**Google Play**

**[www.everexam.org](http://www.everexam.org) | For Enquiry: 8595517959**

Q: ) The rail is designated by its

A : length

B : weight

C : cross-section

D : weight per unit length



Youtube CHANNEL

**EVEREXAM**

Q: ) Two important constituents in the composition of steel used for rail are

A : carbon and silicon

B : manganese and phosphorous

C : carbon and manganese

D : carbon and Sulphur



Youtube CHANNEL

EVEREXAM

Q: ) The standard length of rail for Broad Gauge and Metre Gauge are respectively

A : 12 m and 12 m

B : 12 m and 13 m

C : 13 m and 12 m

D : 13 m and 13 m

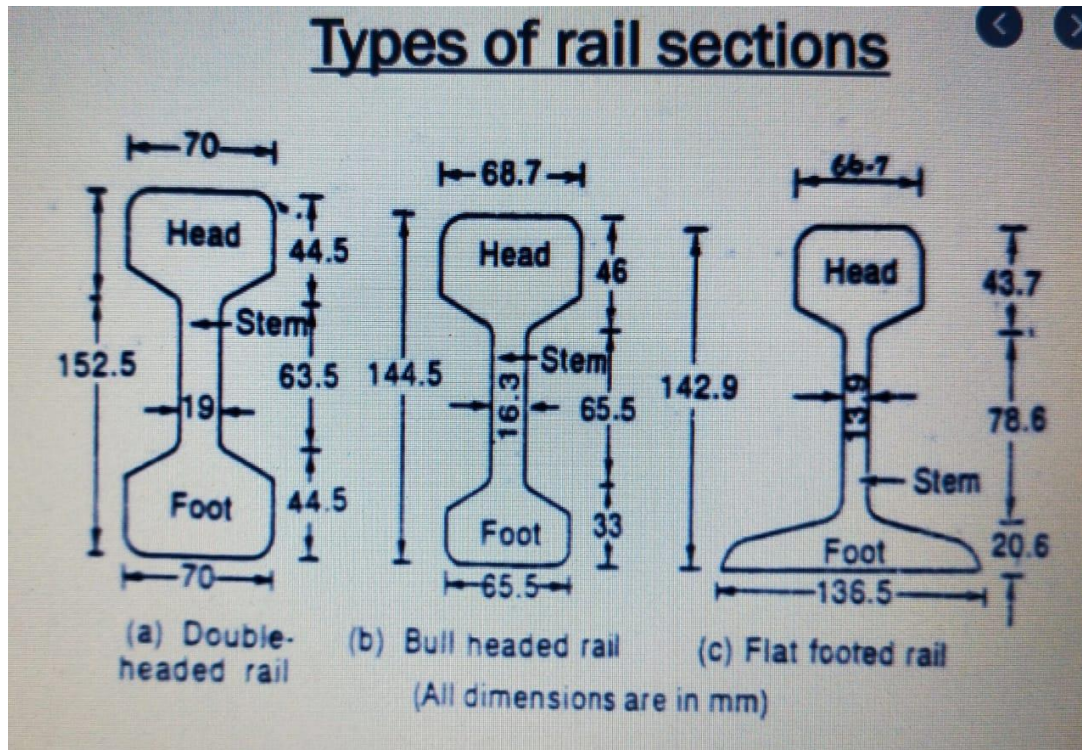


Youtube CHANNEL

EVEREXAM



Q: ) Largest dimension of a rail is its



A : Height

B : Foot width

C : Head width

D : Any of the above

Q: ) The purpose of providing fillet in a rail section is to

A : Increase the lateral strength

B : Increase the vertical stiffness

C : Avoid the stress concentration

D : Reduce the water



Youtube CHANNEL

EVEREXAM

Q: ) 52 kg rails are mostly used in

A : Broad Gauge

B : Metre Gauge

C : Narrow Gauge

D : Both (A) and (B)

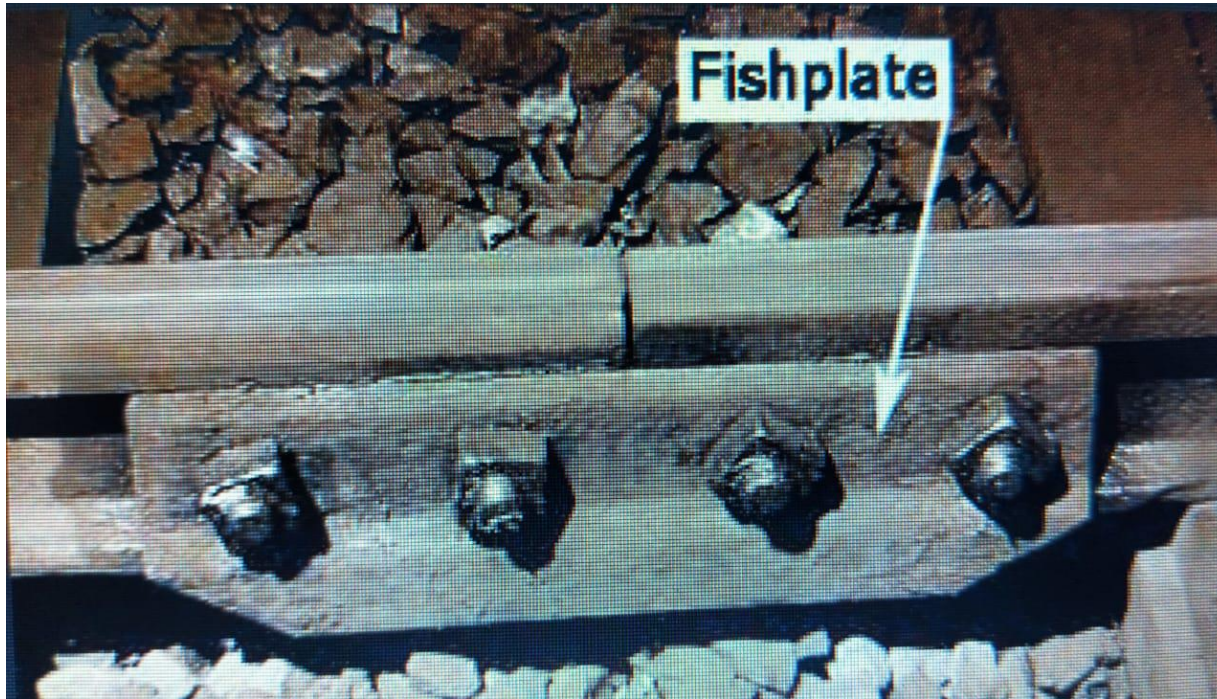


Youtube CHANNEL

**EVEREXAM**



Q: ) The main function of a fish plate is



A : To join the two rails together

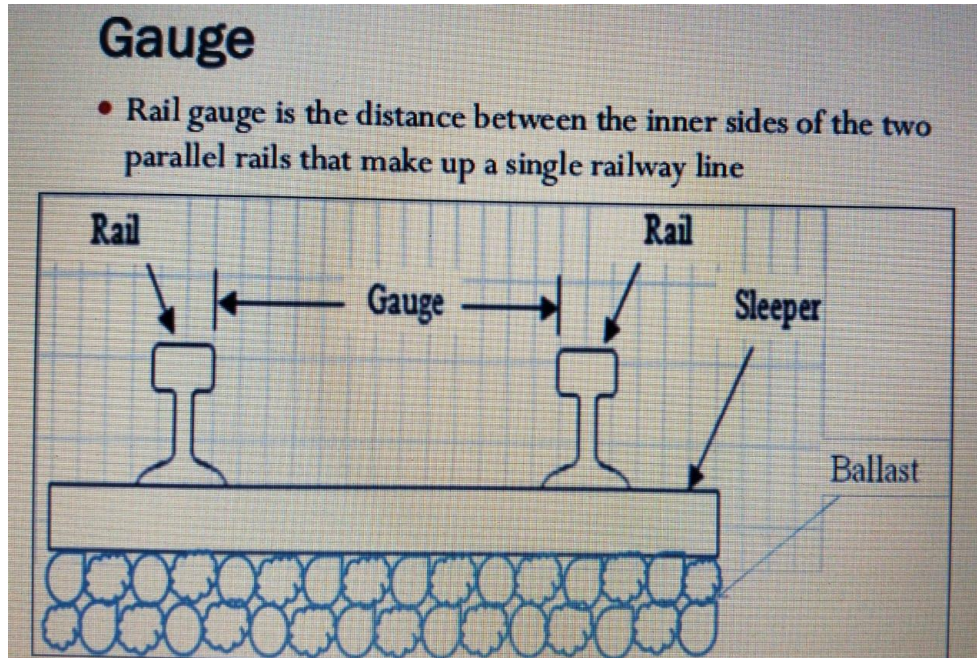
B : To join rails with the sleeper

C : To allow rail to expand and contract freely

D : None of the above



Q: ) Gauge is the distance between



A : Centre to centre of rails

B : Running faces of rails

C : Outer faces of rails

D : None of the above

Q: ) Which of the following factors govern the choice of the gauge?

(i): Volume and nature of traffic

(ii): speed of train

(iii): physical features of the country

The correct answer is

A : only (i)

B : both (i) and (ii)

C : both (ii) and (iii)

D : (i), (ii) and (iii)



Learn More, Earn More

Youtube CHANNEL

EVEREXAM

Q: ) The width of foot for 90 R rail section is

A : 100 mm

B : 122.2 mm

C : 136.5 mm

D : 146.0 mm



Youtube CHANNEL

**EVEREXAM**

Q: ) Which of the following types of sleepers is preferred on joints?

A : CST-9 sleeper

B : Steel trough sleeper

C : Wooden sleeper

D : Concrete sleeper



Youtube CHANNEL

**EVEREXAM**



Q: ) Minimum Depth of ballast cushion for a broad gauge wooden sleeper of size  $275 \times 25 \times 13$  cm with 75cm sleeper spacing is

A : 15 cm

B : 20 cm

C : 25 cm

D : 30 cm



Youtube CHANNEL

**EVEREXAM**

Q: ) Sleeper density in India is normally kept as

A :  $M + 2$  to  $M + 7$

B :  $M$  to  $M + 2$

C :  $M + 5$  to  $M + 10$

D :  $M$

Where  $M$  is the rail length metres.



Youtube CHANNEL

EVEREXAM

Q: ) Study the following statements regarding creep.

1. Creep is greater on curves than on tangent railway track.
2. Creep in new rails is more than that in old rails.
3. Creep is more on steep gradients than on level track.

The correct answer is

A : Only (1)

B : (1) and (2)

C : (2) and (3)

D : (1),(2) and (3)



Learn More, Earn More

Youtube CHANNEL

EVEREXAM

Q: ) Minimum composite sleeper index prescribed on Indian Railways for a track sleeper is

A : 552

B : 783

C : 1352

D : 1455



Youtube CHANNEL

**EVEREXAM**